



# Nandini Enterprises

*Manoj Kumar Sharma*

 **9829296131**  **9351944970**

 Add:- 504/322, 3rd Floor, Girnar-II, Yamuna Marg  
Sec-7, Indira Gandhi Nagar-302017



# ***Our Products***

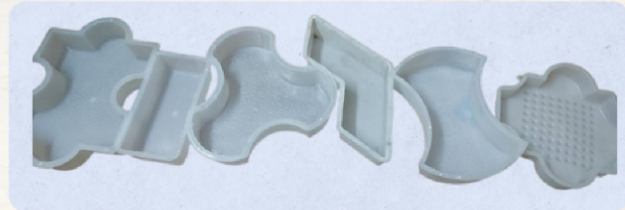
- ***Vibrating table***
- ***Concrete Mixer Machine***
- ***Hydraulic Machine***
- ***Fly Ash Brick Machine***
- ***Colour Mixer Machine***
- ***All Designs Of Tiles Dies***
- ***M.S Dies***
- ***Plastic & P.V.C Mould***
- ***Chemicals, Ply Wood Etc***
- ***Colour Pigments***
- ***All kind of Power Packs***
- ***Chemical Testing Machines & Roller Machine***

***Complete Plant & Unit***

# VIBRATION TABLE PLANT FOR PAVER BLOCKS



Vibrating Table



Colour Mixer



Concrete Mixer Machine



SYNTHETIC  
IRON  
OXIDE  
COLOR  
PIGMENTS



Ply Wood 8x4 Sheets

- Cement concrete tiles, paver & its related product manufacturing plant with german technology for making paver blocks, cement tiles, cover block, designer chequered tiles, kerb stones of variable designs, colours, and strength with different mixdesign. we provide a wide variety of models based on the different needs of the client such as production capacity/ daily product output in manual plant and semi automatic plant, also Tiles manufacturing plant can be customized as per the required needs by choosing the machinery in different sizes, specifications, power etc.
- We, are engaged in offering the finest quality Paver Block Vibrating Table, Concrete Mixer and Color Mixer Machine. The offered color mixer machine is used for mixing granules, concrete, cement and many more for construction purposes and is highly demanded in construction industry.
- Plastic Or PVC Rubber 350 & 450 Chemicals (For strength, hardening, early setting, shining, mould cleanser etc.)
- Concrete Mixer Is available in Different Size According to clients Demand
- Material-Mild
- Size- 10x2.5 feet & 10x3Feet
- PVC Stacking sheets (8 feet x 4 feet)
- Iron Oxide Colours

# Fly Ash Brick Making Plant

Automatic Fly Ash Bricks Plant is used to produce Best Quality Fly Ash Bricks with High Pressure. This Plant is available in Four Models to produce 1000 to 3000 Bricks per Hour.

**Automatic Fly Ash Bricks Plant are available in following models**

- 4 BRICKS PER STROKE - 1200 BRICKS PER HOUR
- 6 BRICKS PER STROKE - 1500 BRICKS PER HOUR
- 8 BRICKS PER STROKE - 1800 BRICKS PER HOUR

Material	Mass
Fly Ash	60%
Sand/Stone Dust	30%
Portland Cement Or Lime	10%

## How To Make Fly Ash Bricks



## Advantages

1. Fly ash bricks reduce the dead load on structures due to their light weight (2.6 kg) Dimension- 230 mm X 110 mm X 70 mm.
2. The same number of bricks will cover a larger area than clay bricks.
3. Fly ash provides high fire resistance.
4. Due to their high strength, there is very little breakage during transport and use.
5. Due to their uniform size, mortar required for joints and plaster reduces almost by 50%.
6. Due to lower water penetration, seepage of water through these bricks is considerably reduced.
7. Gypsum plaster can be directly applied on these bricks without a backing coat of lime plaster.
8. These bricks do not require soaking in water for 24 hours. Sprinkling of water before use is enough

## MACHINE COMPONENTS

- Pan Mixer
- Pan Mixer Gear Box
- Control Panel
- Hydrualic Oil tank
- Conveyor Belt
- Water Cooler
- Trolley



Conveyor Belt

S.No	MACHINE COMPONENTS	MODEL -1200	MODEL -1500	MODEL- 1800
1	Mixer Type	Pan Mixer	Pan Mixer	Pan Mixer
2	Mixer Capacity	400 kgs	500 kgs	500 kgs
3	Pan Mixer Motor	5 HP / 3.75 KW	7.5 HP / 5.625 KW	7.5 HP / 5.625 KW
4	Pan Mixer Gear Box	Planetary Gear Box	Planetary Gear Box	Planetary Gear Box
5	Mixer Speed	26-28 RPM	26-28 RPM	26-28 RPM
6	Mixing Arms	2 Nos. per Mixer	2 Nos. per Mixer	2 Nos. per Mixer
7	Crushing Rollers	2 Nos. per Mixer	2 Nos. per Mixer	2 Nos. per Mixer
8	Pan Mixer Feeding	Manual / Automatic Feeding Available as Optional	Manual / Automatic Feeding Available as Optional	Manual / Automatic Feeding Available as Optional
9	Pan Mixer Gate	Manual / Hydraulic Gate Available as Optional	Manual / Hydraulic Gate Available as Optional	Manual / Hydraulic Gate Available as Optional
10	Belt Conveyor Width	500 mm	500 mm	500 mm
11	Belt Conveyor Power	3 HP / 2.25 KW	3 HP / 2.25 KW	3 HP / 2.25 KW
12	Belt Conveyor Feeding Capacity	5 MT / Hour	7 MT / Hour	7 MT / Hour
13	Bricks Press Type	Automatic Hydraulic Bricks Press with Prefill Technology	Automatic Hydraulic Bricks Press with Prefill Technology	Automatic Hydraulic Bricks Press with Prefill Technology
14	Bricks Press Body	Heavy Duty Window type Body Fabricated from M S Plate	Heavy Duty Window type Body Fabricated from M S Plate	Heavy Duty Window type Body Fabricated from M S Plate
15	Bricks Press Capacity	1100-1200 Bricks/Hour	1500-1600 Bricks/Hour	1700-1900 Bricks/Hour
16	Bricks Press Tonnage	Max. 45 MT	Max. 55 MT	Max. 70 MT
17	Pressing Cylinder Bore Dia.	180 mm	200 mm	225 mm
18	Bricks per Stroke	4 Bricks	6 Bricks	8 Bricks
19	Bricks Size(mm)	230 (L) X 110 (W) X 75 (H) Size Option Available	230 (L) X 110 (W) X 75 (H) Size Option Available	230 (L) X110 (W) X 75 (H) Size Option Available
20	Hydraulic Motor	10 HP / 7.5 KW	10 HP / 7.5 KW	12.5 HP / 9.375 KW
21	Trolley Feeder Motor	0.5 HP / 0.375 KW	1HP / 0.75 KW	1 HP / 0.75 KW
22	Box Feeder Motor	---	---	...
23	Hyd. Oil Tank Capacity	250 ltrs	250 Ltrs	250 Ltrs
24	Hydraulic Valves	YUKEN Make / 240 VAC	YUKEN Make / 240 VAC	YUKEN Make / 240 VAC
25	High Pressure Pump	YUKEN Make VAN Pump	YUKEN Make VAN Pump	YUKEN Make VAN Pump
26	High Flow Pump	YUKEN Make VAN Pump	YUKEN Make VAN Pump	YUKEN Make VAN Pump
27	Oil Cooling	Water Cooling	Water Cooling	Water Cooling
28	Control Panel	P L C Based Control Panel	P L C Based Control Panel	P L C Based Control Panel
29	Pallet Feeding	Automatic	Automatic	Automatic
30	Pallatiser Motor	1 HP / 0.75 KW	1.5 HP / 1.125 KW	1.5 HP / 1.125 KW
31	Pallet Size	350 X 570 X 19 mm	430 X 570 X 19 mm	570 X 570 X19 mm
32	Total Power	19.5 HP / 14.625 KW	23.0 HP / 17.25 KW	25.5 HP/19.125 KW

# LOOKING FOR INTERLOCKING & PAVER PLASTIC MOULDS



I-Shape



Zig- Zag



L- Shape



Kerb Stone



Saucer Drain



Olympia



X Shape



Milano



V Shape



Cosmic



Dumru



Oxford



Arch



Barfi



Chakla



Tenn Dabbi



Rectangular Plastic Brick  
9x4.5.3



D-Shape



12x6x60mm



8x9x60mm



**Flat Brick**  
300x150x50mm



**Electric Cable Cover Mould**



**Kerb Stone 12x8x4 Round**



**Brick 300x150x50mm**



**8/8 x60mm 4 Dabbi**

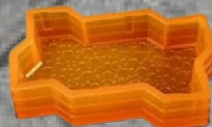
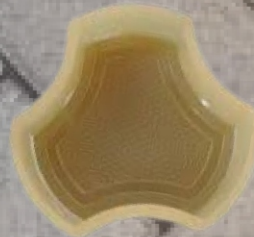


**Piston Mould**

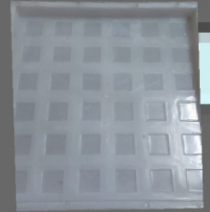
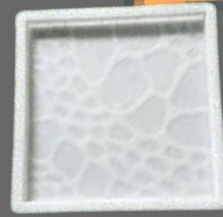
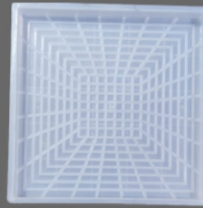
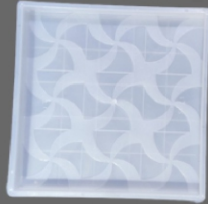


## Kerb Stone Available Size

12x12x6	Taper	12x12x6	Round	12x16x6	Round +Taper
12x10x6	Taper	12x8x4	Round	12x16x4	Round + Taper
18x8x5	Taper	12x14x6	Round	12x18x6	Round + Taper
12x12x4	Taper	12x12x4	Round	12x18x4	Round + Taper



# Chequered Tile Designs



# Vibration Table



**Vibration Table is used for giving vibration to moulds in manufacturing of wide variety of cement tiles, paver blocks and designer tiles**

## **Specification**

- *Main Sheet -8 mm (Heavy Duty Work On Complete Table)*
- *Electirical Supply Requirement - 3 Phase A.C Supply*
- *Dimension - 10Feet X 3Feet & 10Feet X 2.5Feet*
- *Motor - 2 Phase & 3 Phase*

# Hydraulic Press Machine



Hydraulic Tile Press Machine which are used to make the level of tiles uniform. These machines are developed with high-tech technology and quality raw components. The skilled engineers fabricate these machines in various specific functions and size to suit the particular requirements of the clients.

## **Specification**

- **Power Pack Capacity: 210 ltr**
- **Electric Motor: 5 Hp (Siemens, kirloskar or Crompton)**
- **Production Capacity: 3000 pc/Shift**
- **Load Capacity : 30 to 70 Tonage**

# Colour Mixer Machine

Colour Mixing Machine are used to mix granulated solid plastic raw material and master batch. It is a large plastic material mixing equipment and has advantages of big capacity, low energy consumption and high working efficiency.



## **FEATURES:**

- Robust construction
- Easy to operate
- Long service life
- Durable
- Excellent performance
- Enhanced running time
- Robustness
- Quality assured components used

## **SPEGIFICATION**

- Thickness of Drum : 6 mm
- Capacity : 150 Kgs
- Automatic Grade- Semi Automatic
- Material- Mild Steel
- Phase- Three Phase
- Voltage -220V
- Bottom Mixture Plate Size - 8mm
- Available Machine Diameter- 2.5ft
- Motor- 3 HP
- Mixing Time- 15 Min - 25 Min
- Bottom Mixture Plate Size - 8mm

# One Bag Diesel Engine Concrete Mixer Machine



A concrete mixer is a machine used in construction to mix cement, water, and other materials such as sand, gravel, and sometimes additives, to make concrete.

## Specification

- Usage - Concrete Mixer Machine
- Power Source- Diesel
- Power- 5 HP Air Cooled Diesel engine
- Type Of The Drum Mixer -Tilting Drum Mixer
- Heavy Duty M.S. Channel Chassis 4x2
- Special platform provided on operating side for convenient & safe operation of the machine.
- Mixing of 10/7 one bag cement mixture without hopper on construction sites.
- Base Plate- 8mm
- Patta - 7 mm
- Hopper - 4 mm
- Single Garari
- Brand New Pneumatic Tyres 13 inches
- Diesel Brand - Field Marshal, Alamgir, Kirloskar



# Diesel Engine 1.5 BAG MIXER Machine



## Specification

- Usage-Concrete Mixing
- Power Source-Diesel Engine
- Type Of The Drum Mixer -Tilting Drum Mixer
- Heavy Duty M.S. Channel Chassis 4x2
- Capacity-1.5 BAG
- Mixing of 10/7 one bag cement mixture without hopper on construction sites.
- Weight-750 KG
- Special platform provided on operating side for convenient & safe operation of the machine.
- Power- 8HP AIR COOLED
- Chassis Material-Mild Steel
- Brand New Pneumatic Tyres 13 inches
- Diesel Brand - Field Marshal, Alamgir, Kirloskar

# Electric Half Bag Concrete Mixer



## Specification

- Usage-Concrete Mixing
- Type Of The Drum Mixer -Tilting Drum Mixer
- Capacity- Half Bag
- Heavy Duty M.S. Channel Chassis 3x1.5
- Chassis Material-Mild Steel
- Brand New Pneumatic Tyres 13 inches
- Motor -1 HP Three Phase
- Patta - 5 mm
- Hopper - 3 mm
- Single Garari
- Base Plate- 8mm
- Drum Size- 35 inch
- Wheel Size -6inch

# Electric One Bag Concrete Mixer



## Specification

- Usage-Concrete Mixing
- Type Of The Drum Mixer -Tilting Drum Mixer
- Capacity- One Bag
- Heavy Duty M.S. Channel Chassis 4 x2
- Chassis Material-Mild Steel
- Brand New Pneumatic Tyres 13 inches
- Motor -3 HP Three Phase
- Patta - 7 mm
- Hopper - 4 mm
- Single Garari
- Bottom Plate- 10 mm
- Drum Size - 35 inch

# Electric 1.5 Bag Concrete Mixer

## Specification

- Usage-Concrete Mixing
- Type Of The Drum Mixer -Tilting Drum Mixer
- Capacity- 1.5 Bag
- Heavy Duty M.S. Channel Chassis 4 x2
- Chassis Material-Mild Steel
- Brand New Pneumatic Tyres 13 inches
- Motor -5 HP Three Phase
- Patta - 8 mm
- Hopper - 4 mm
- Single Garari
- Bottom Plate- 10 mm
- Drum Size - 38 inch



# Electric Pona Bag Concrete Mixer



## Specification

- Usage-Concrete Mixing
- Type Of The Drum Mixer -Tilting Drum Mixer
- Capacity- Pona Bag
- Heavy Duty M.S. Channel Chassis 3 x 1.5
- Chassis Material-Mild Steel
- Brand New Pneumatic Tyres 13 inches
- Motor - 2 HP Three Phase
- Hopper - 3mm
- Bottom Plate- 8 mm
- Patta - 6 mm
- Wheel Size- 6 inch
- Single Garari

# Electric Concrete Mixer Without Tyre



## Specification

- Usage-Concrete Mixing
- Type Of The Drum Mixer -Tilting Drum Mixer
- Capacity-Half Bag , One Bag, Pona Bag ,1.5 Bag
- Heavy Duty M.S. Channel Chassis
- Chassis Material-Mild Steel
- Motor - 3 HP Three Phase
- Bottom Plate- 8 mm
- Single Garari
- Patta - 6 mm
- Hopper - 3mm

# **Pan Mixer Machine**



The Pan Mixture Machine is a robust and efficient solution designed for mixing concrete, cement, and other construction materials. This versatile machine offers exceptional performance, reliability, and ease of use, making it an essential tool for construction companies, contractors, and tile manufacturers.

## **PAN MIXTURE MACHINE**

- 1. MOTOR : 7.5 HP SGL. MOTORS BRAND**
- 2. BATCH CAPACITY : 300 KGS (MAXIMUM)**
- 3. DIEMENTION : DRUM 48 INCHES HEIGHT 59 INCHES APPROX**
- 4. Motor WARRANTY : 12 MONTH**
- 5. ELECTRICAL SUPPLY : 3 PHASE AC SUPPLY**
- 6. GEAR BOX : 12 LITRE HEAVY DUTY OIL FILLED GEAR BOX**

# **D-Moulding Machine**



**Molding machines are machine tools in the field of sand molding that use tools (pattern plate, core box) to produce the workpieces (mold parts, mold halves, mold cods**

- **Material- Mild Steel**
- **Power Source- electric**